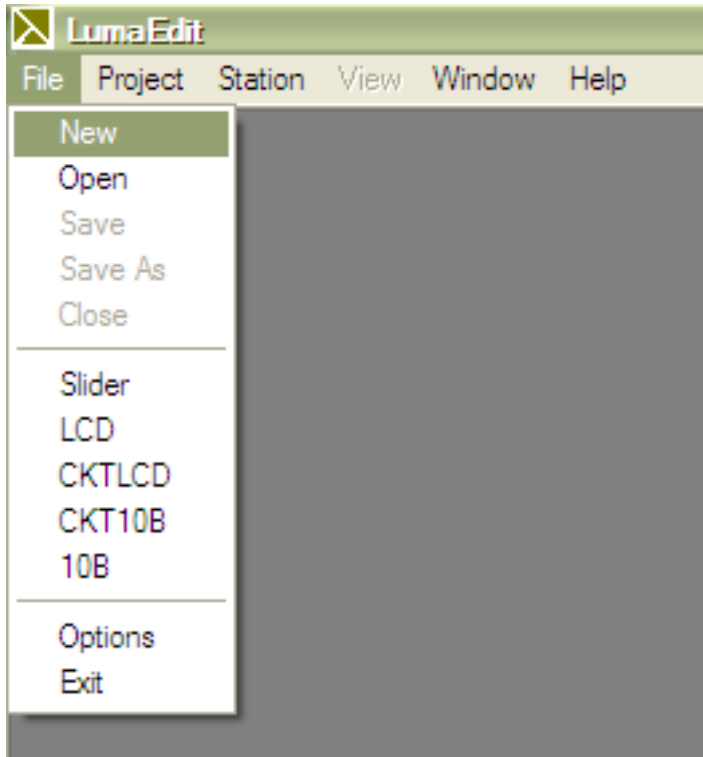


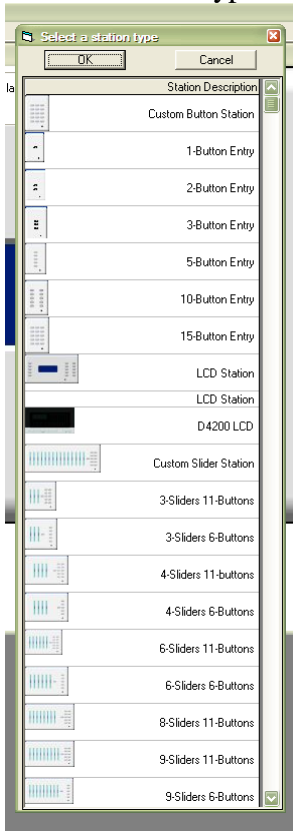
1. Open the Luma-Edit Program



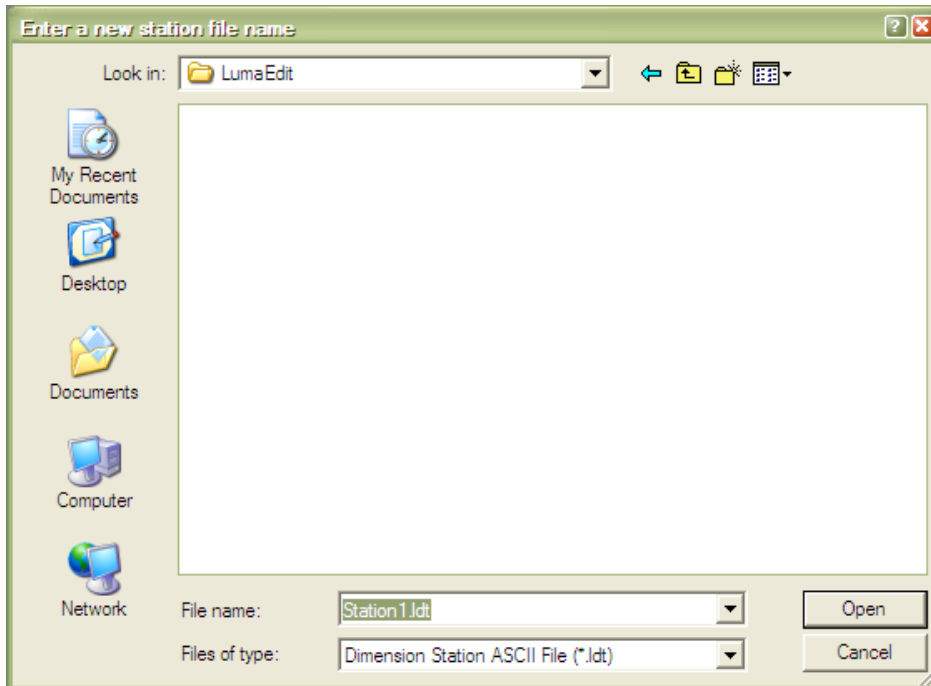
2. Go to File – New



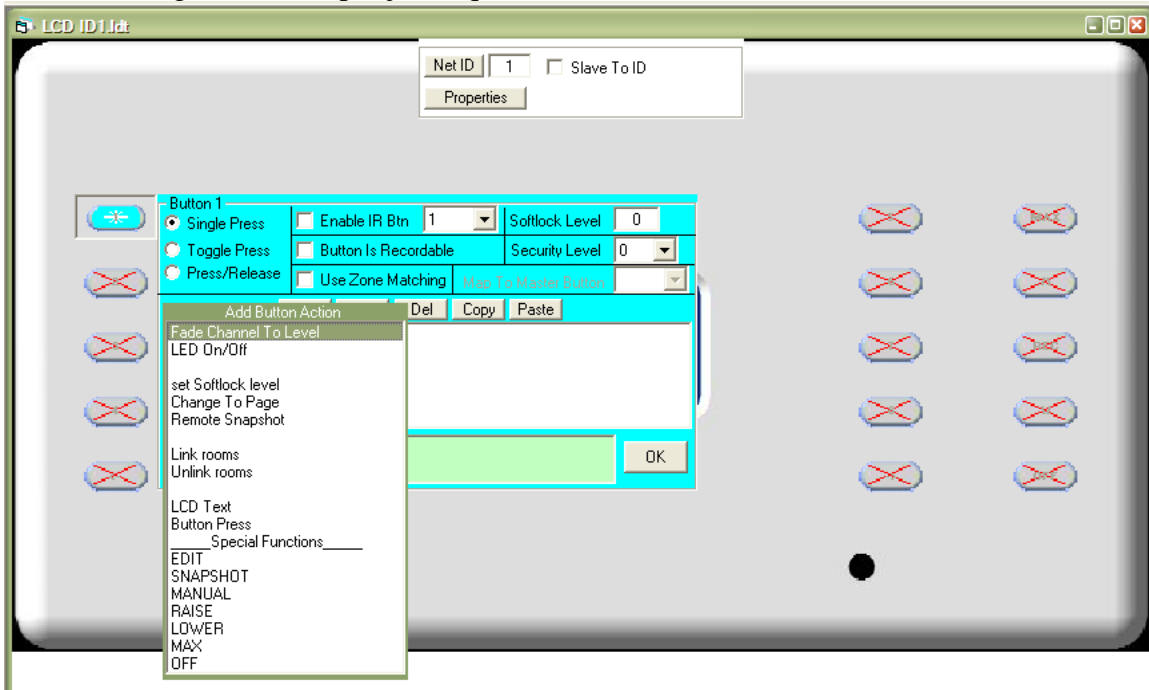
3. Choose the type of station to configure



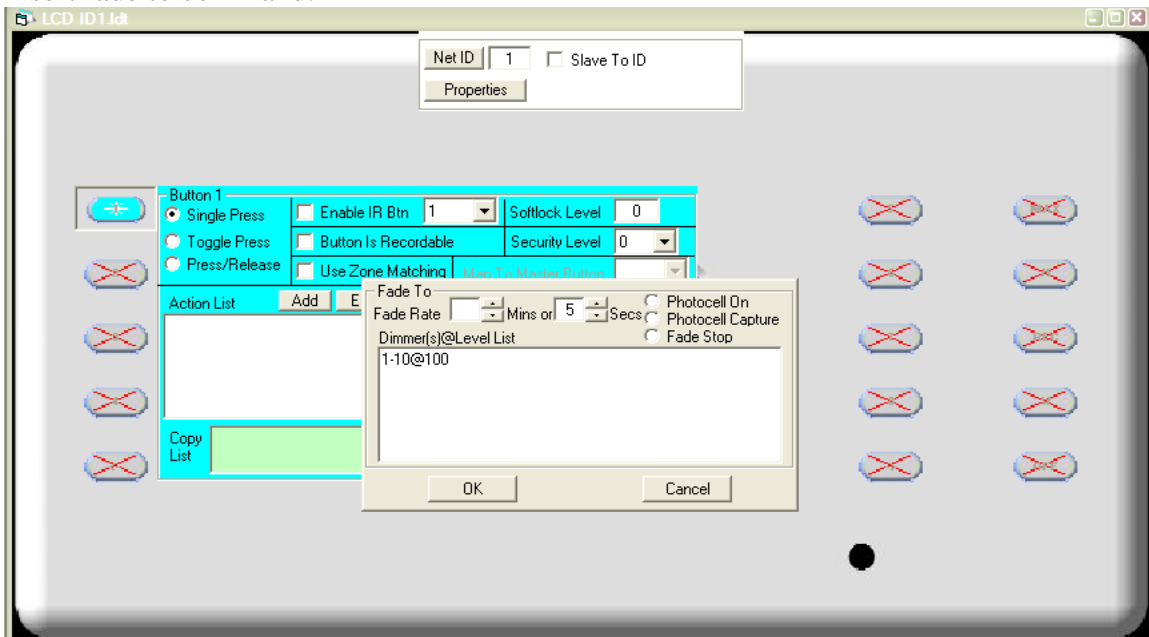
4. Save station file



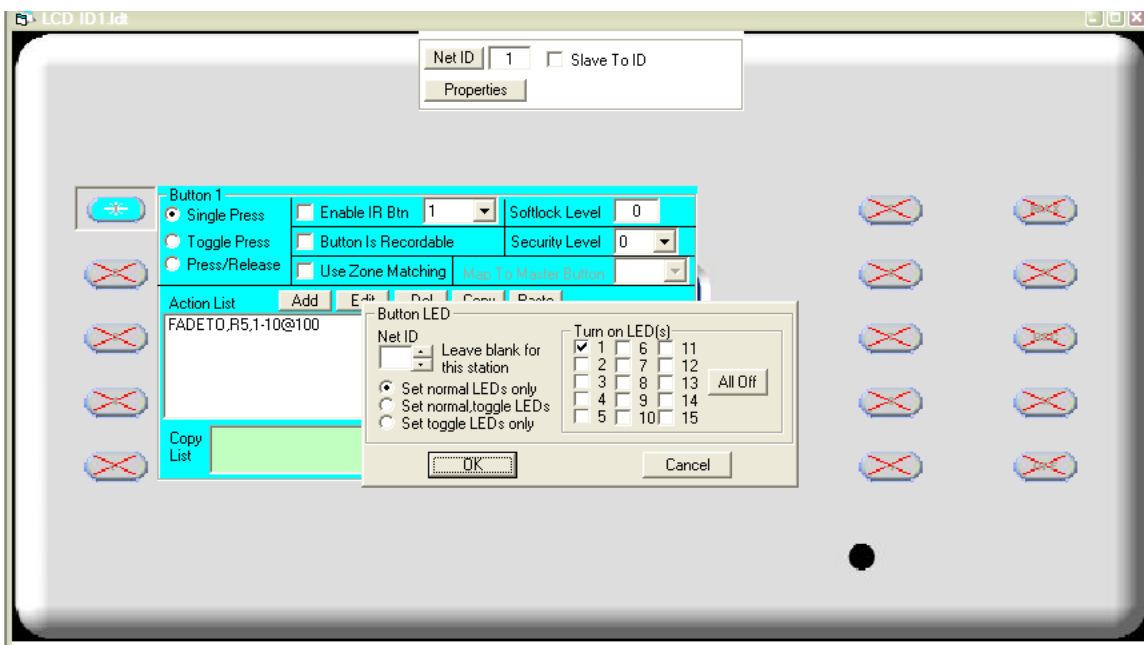
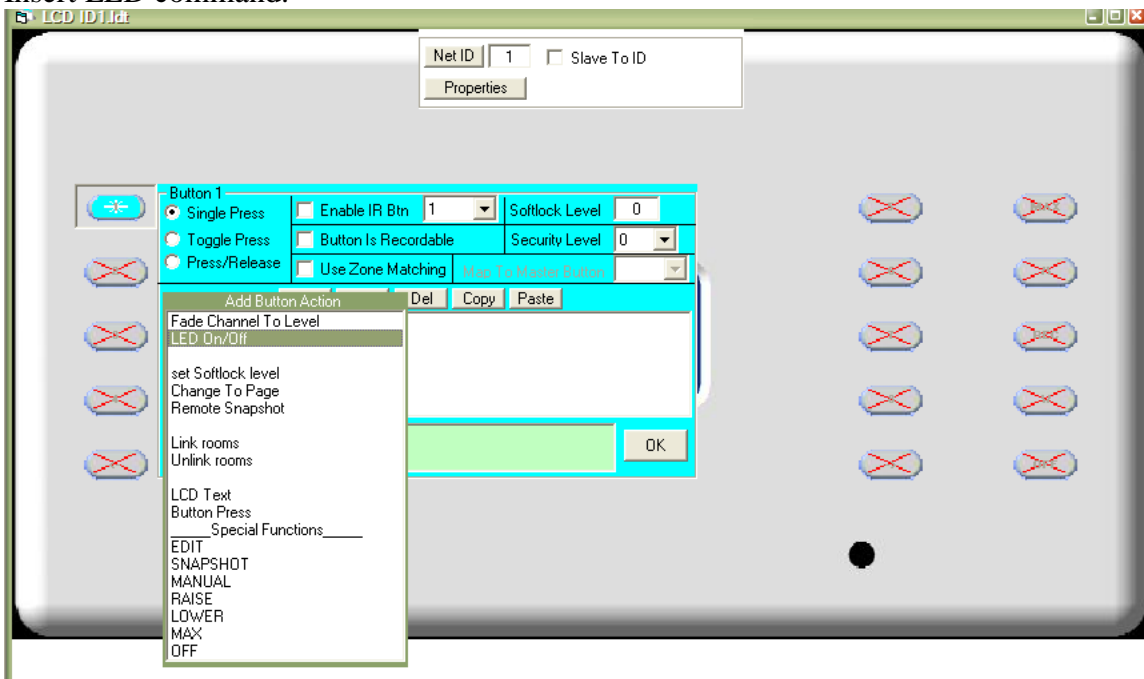
5. Configure buttons per job requirements



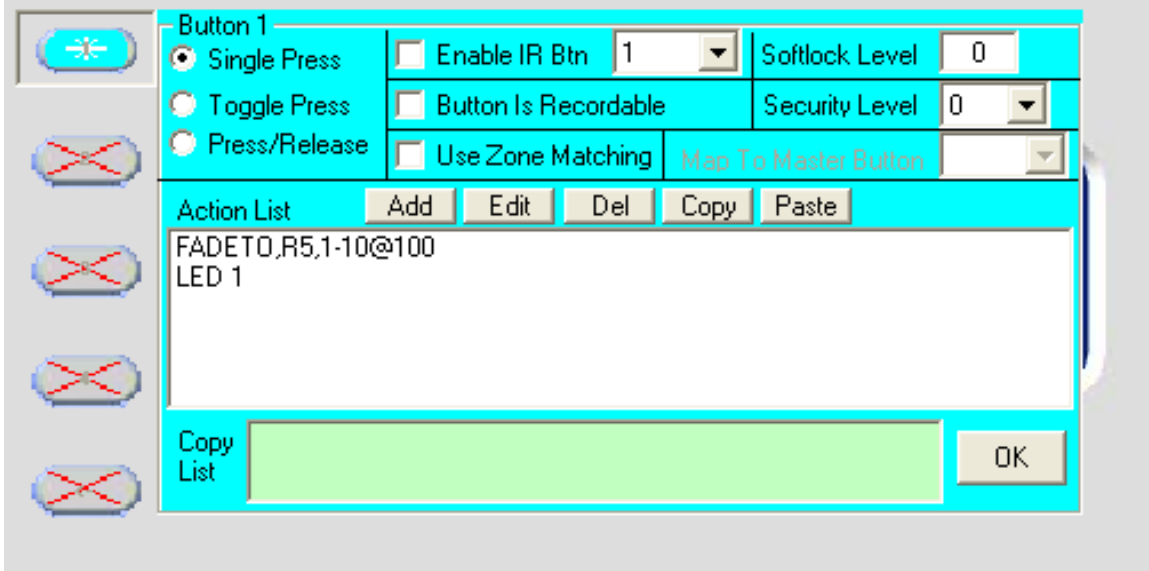
Insert fade to command.



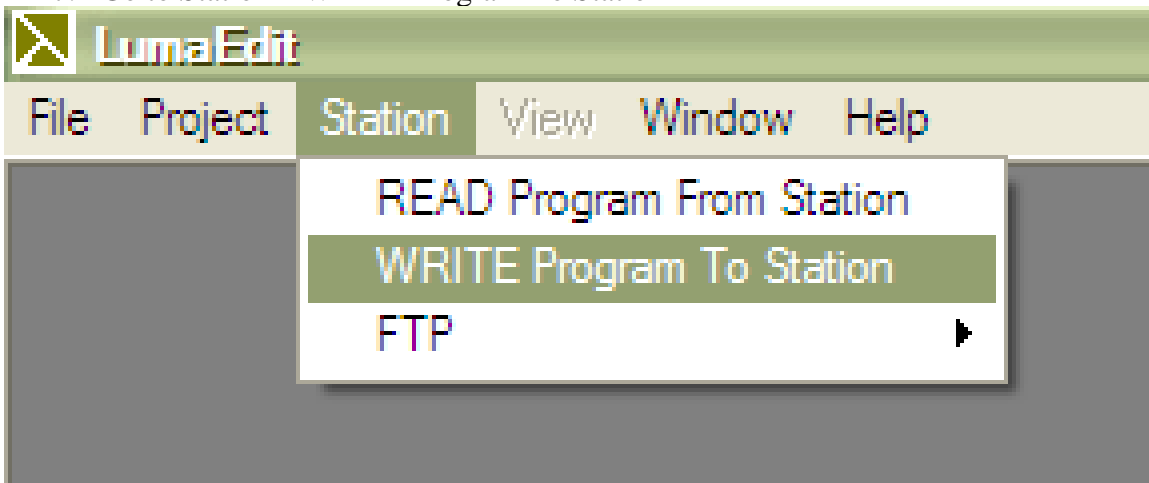
Insert LED command.



Here is the example after loading the Fade Channel To Level and LED On/Off Command.



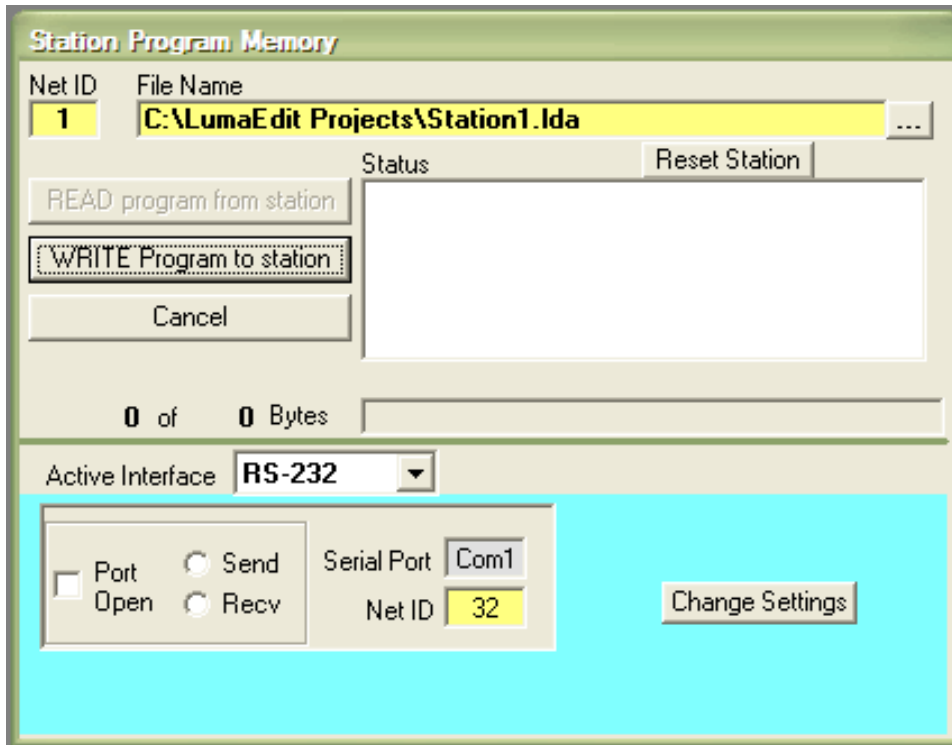
6. Go to File – Save As
7. Go to Station – WRITE Program To Station



8. At this time make sure that NET ID in the upper left hand corner is set to the proper ID of the station that you are going to send the information to.
 - a. Active interface should be RS-232 or NPC depending on the interface

If using RS232

- i. Serial Port should be Com 1 – Make sure that the port you are using off of the computer is Com 1 or one of the other available options.
- ii. The NET ID just below Serial Port should be the ID of the RS-232 port.
- iii. Click on WRITE Program to Station button.



If using NPC

- i. Type in the IP address of the NPC you are communicating thru.
- ii. Press the Write Program to station button.
- iii. Press "OK" to reset the station when it prompts you.

